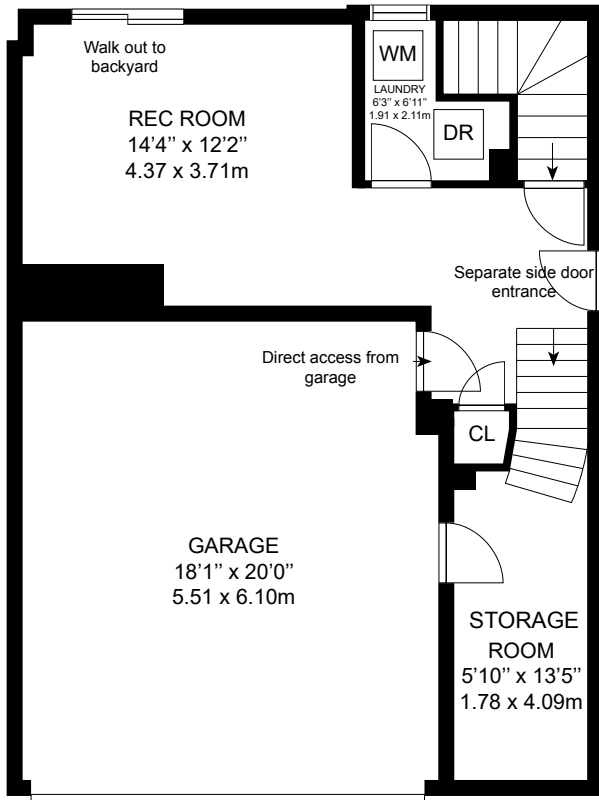
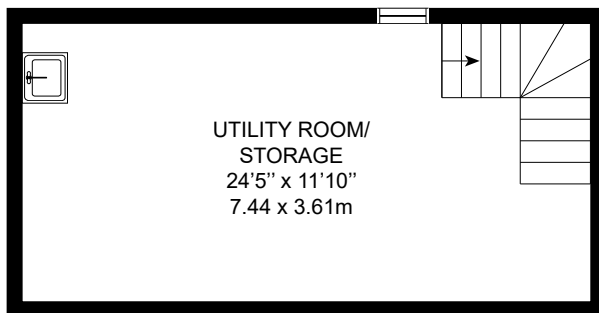


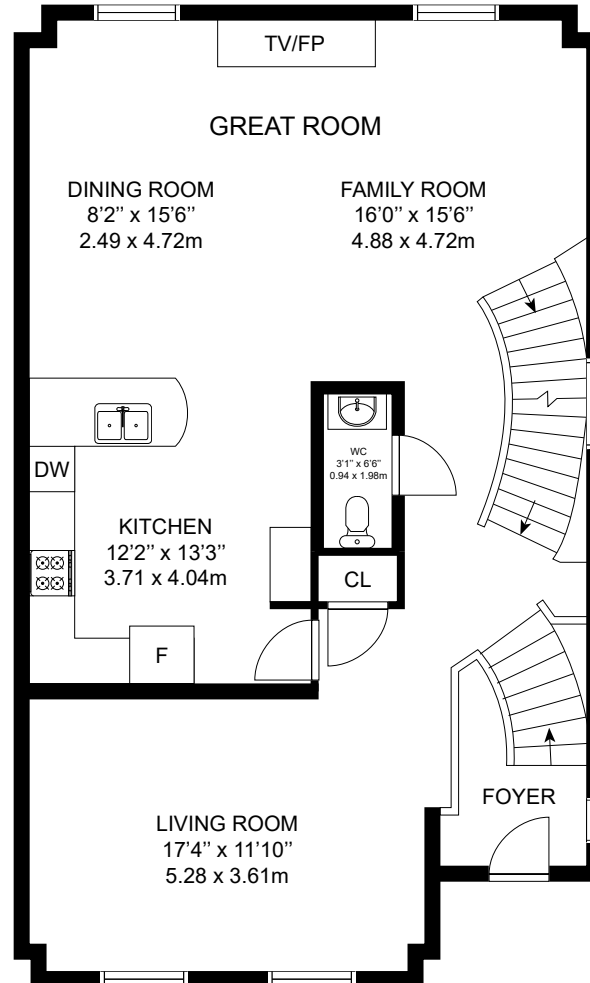
9 MASTWOOD CRES WEST ROUGE, TORONTO ON



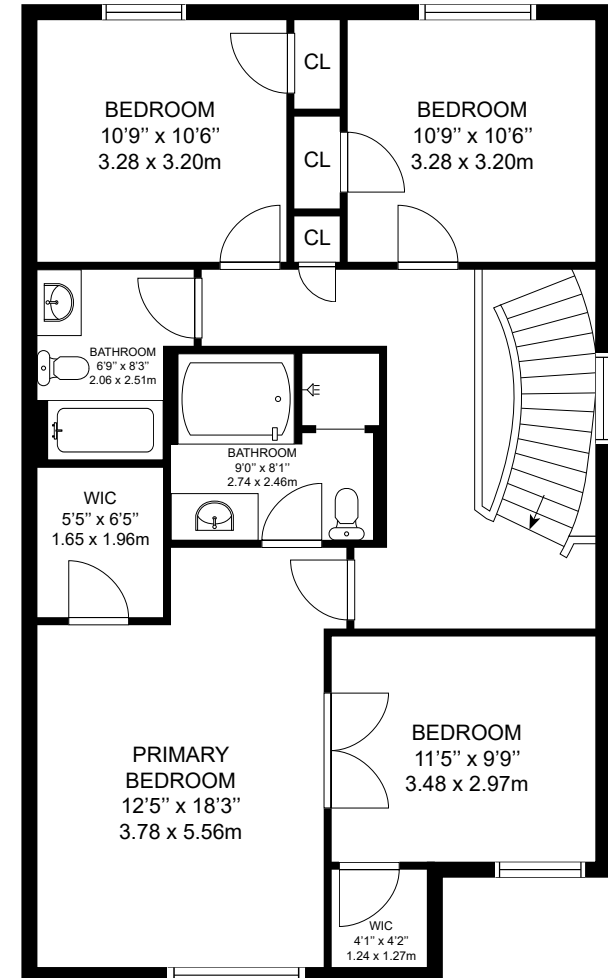
MAIN LEVEL 1



LOWER LEVEL



MAIN LEVEL 2



2ND LEVEL

GROSS INTERNAL AREA
 LOWER LEVEL: 351 sq. ft, MAIN LEVEL 1: 507 sq. ft
 MAIN 2 LEVEL: 1096 sq. ft, 2ND LEVEL: 1007 sq. ft
 TOTAL: 2961 sq. ft, 275 m²