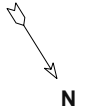


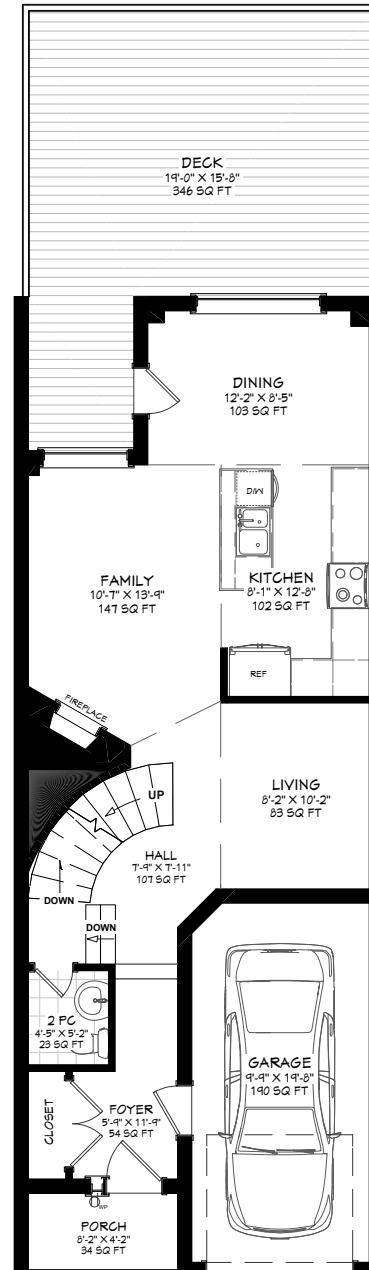
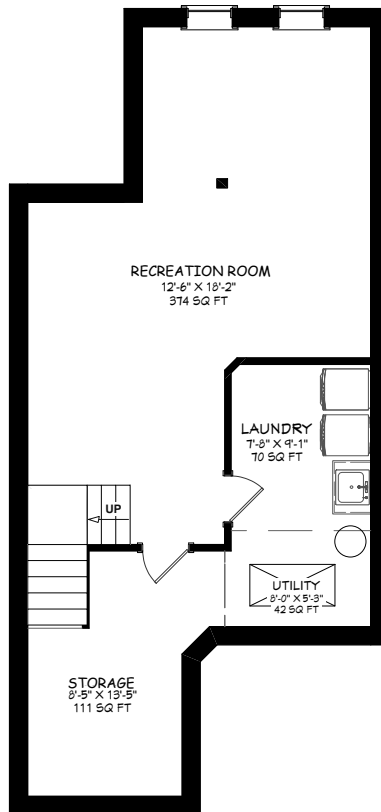


# 4 PORTWINE DRIVE

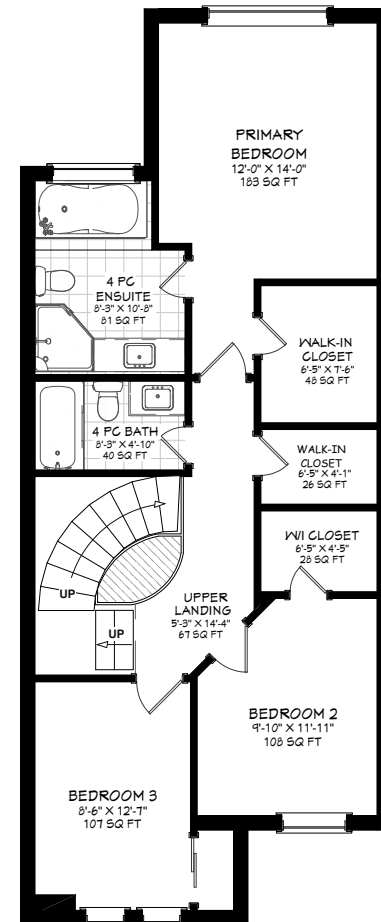


## MAIN LEVEL LIVING AREA 714 SQ FT

## LOWER LEVEL LIVING AREA 763 SQ FT



## UPPER LEVEL LIVING AREA 420 SQ FT



Prospective purchasers should satisfy themselves as to the accuracy of the information contained in this feature sheet. All measurements are approximate. The statements contained herein are based on sources which we believe are reliable, but for which we assume no responsibility.